

DFB-LFV / LFH stainless steel

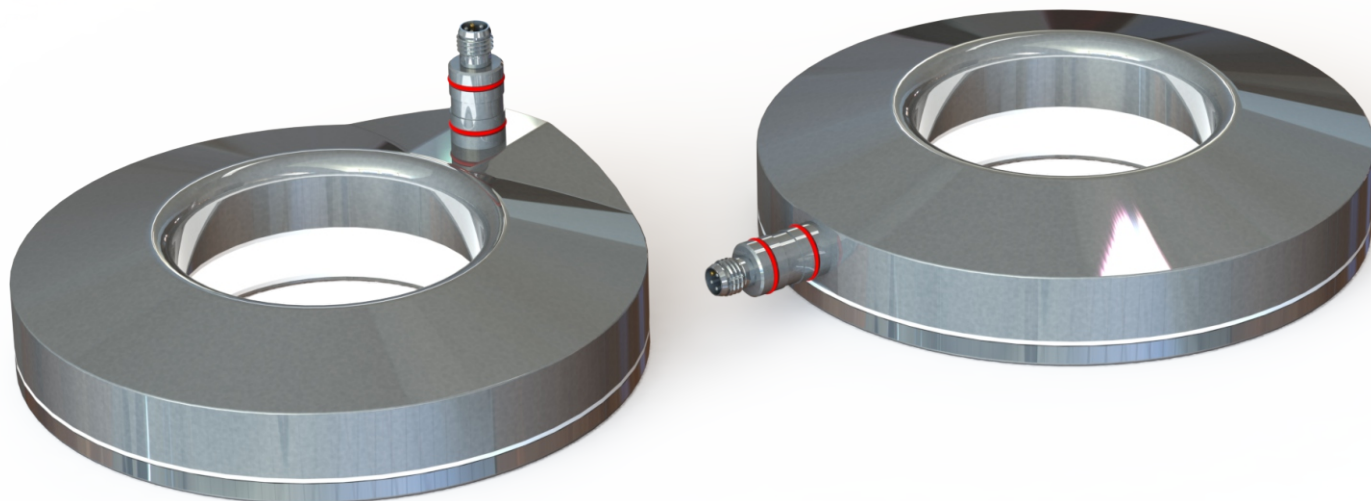
LED-Dark field illumination Laminar flow



StainlessSteel Standard connection M8 316L Laminar flow DIN EN 61076-2-104 optimised

Laminar flow-optimised LED dark field illumination for the highest quality demands in the pharmaceutical industry, diagnostics and medical technology.

The homogeneous, targeted object illumination ensures first-class results in camera-based image processing.

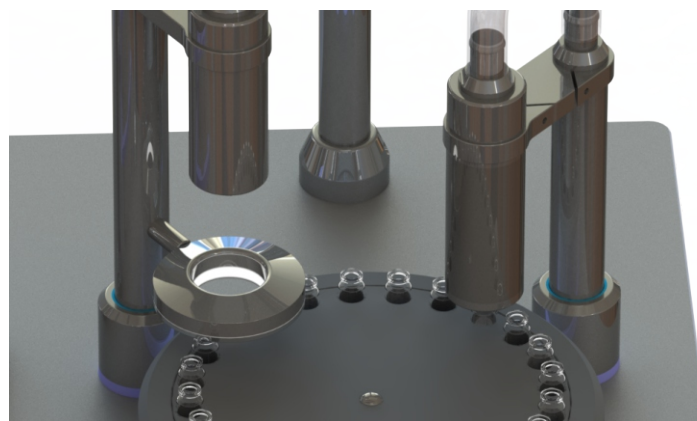


Powerful, durable, compact

Brief description

LED dark field illumination DFB-LFV / LFH

The homogeneous, targeted illumination of this LED dark field illumination enables excellent results in camera-supported image processing. An important component for the performance and the result of the entire quality assurance system. The robust, compact, laminar flow and cleaning-optimised design, together with the high manufacturing quality and IP69K protection class, are further features of this series. Available with internal controller 24VDC as well as in the S1 version for control with an external controller.



Technical data standard version

supply voltage:	24 VDC ($\pm 10\%$)
power continuous operation:	depending on the version and light source
trigger time max (Ti):	10 ms
trigger/pause time (Ti/Tp):	1/10
service life (MTBF):	min. 20.000 h
ambient temperature:	0 °C ... 40 °C
protection class:	IP69K
UL-compliant	



Electrical connections

Version 1: S1 with external controller (standard version)
 Version 2: with internal controller
 Sensor plug M8 / 4-pole (DIN EN 61076-2-104)

PIN	colour	description
1	brown	supply voltage constant current source e.g. BR01-2A
2	white	N.C.
3	blue	0V GND
4	black	N.C.

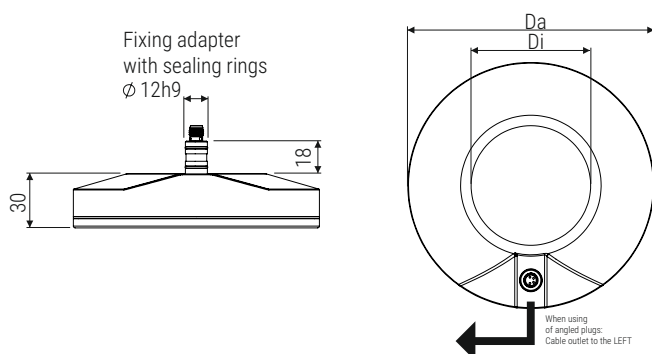


version S1 without controller may only be operated with constant current source BR01-2A be operated.

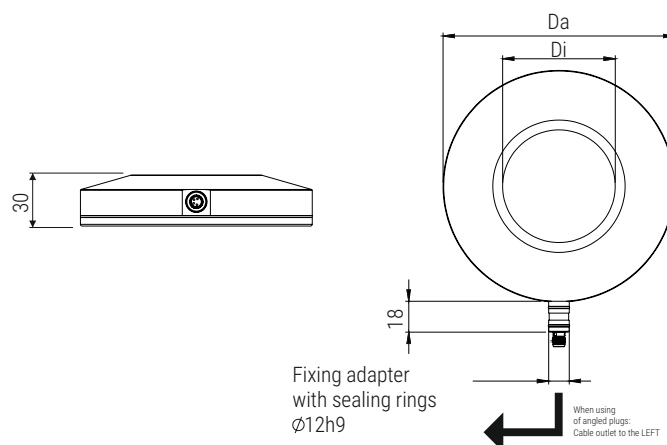
Areas of application

- pharmaceutical industry
- medical technology
- diagnostics
- food industry

Dimensions DFB-LFV (mounting adapter vertical)



Dimensions DFB-LFH (mounting adapter horizontal)



model	lightfield plate	light colours	housing material	Da mm	Di mm	H mm	weight VA g	current max. continuous light mA	current max. strobe mode mA
DFB-LFV-135-D12-VA	Glass clear GK	white WS	Stainless steel AISI 316L (1.4404) VA0	135	65	30	1850	depending on the version and light source	
DFB-LFH-135-D12-VA									

subject to change without notice. Further model variants and special solutions on request.

info@etw-technik.de • www.etw-technik.de

DasTechnikTeam.