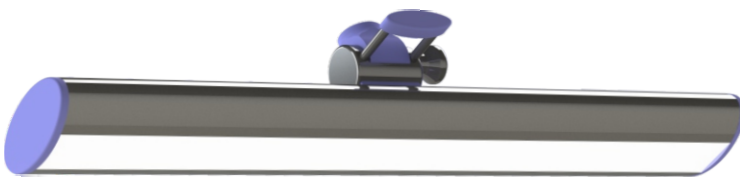


PPL LED-test station lighting

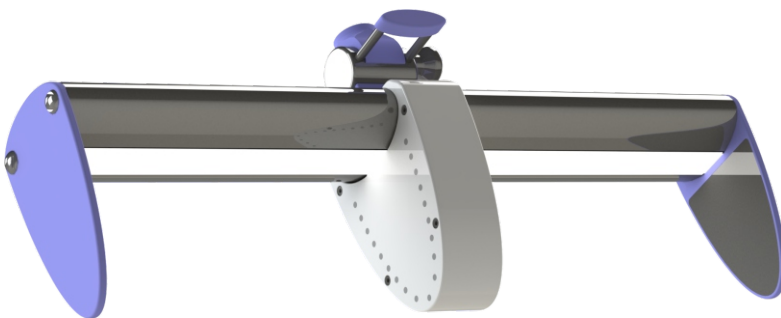
stainless steel



Ergonomic, high-quality test station lighting made of stainless steel, for the highest hygienic standards. Homogeneous test station illumination - optimal test results - reproducible.



PPL-500 LSO
LED test station lighting without light barrier module



PPL-500 LSE
LED test area lighting with light barrier grid Infrared (non-visible light)
elliptical, circumferential light grid arrangement
Object detection from 0 - 100 mm from light emission surface
LED display left-right

MODULE test station lightning PPL

PPL-500 diffuse	lightcolour	white 6500K	LED-CRI: >90 Ra	
	lightfield	LS0: 500 x 24 mm		LSE: 2 x 224 mm x 24mm
	illuminance \geq (lx)	11.000	4.500	2.800
	test distance in mm	100	200	300
	application for test objects from	plastic - stained glass - clear glass		
	scale for LFR lightfield grid	200 mm left / 200 mm right (on PPL-corpus)		
	angle adjustment	+/- 40°, scale		
	housing material FDA	stainless steel / POM C blue / POM white		