

## CBS-P camera-protection housing

stainless steel



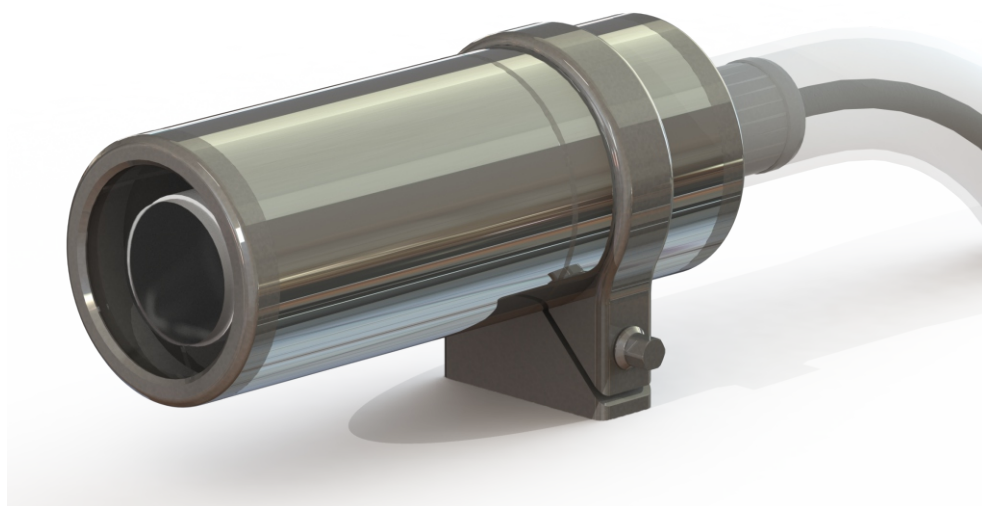
# IP69

protect

# AISI 316L

camera adapter  
1.4404  
inside

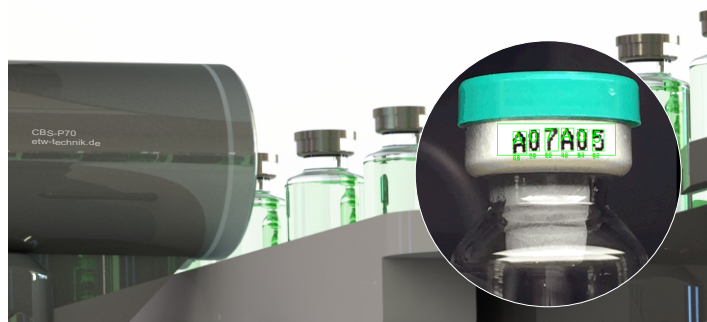
Robust, high-quality camera-protection housing made of stainless steel, for highest hygienic, GMP-compliant requirements in the image processing sector.



Hygienic, robust, flexible - Made in Germany

### brief description

The demand for an extremely compact, cleaning-optimized camera protection housing answers "the technology team" with the high quality CBS series in stainless steel 1.4404. The CBS-P camera protection housing corresponds to protection class IP69 and is resistant to aggressive media, such as dust, dirt, cleaning- and disinfectant supplies, humidity, etc. GMP-compliant designed and manufactured, the highest requirements are met in the pharmaceutical production process. The camera cable is passed through a protective hose, optimally sealed and perfect to clean. The integrated camera fixing is designed precisely to your camera and allows a flexible positioning. Focusing occurs in a fixed installed condition, without having to change the position of the camera.



## features

- stainless steel housing 1.4404
- hygienic design with cable entry at the rear ring
- Protection against external influences such as dust, dirt, humidity as well as acid- and alkali resistant
- flexible camera positioning by integrated rail
- simple installation with mounting 2xM6 threaded holes
- front ring with acrylic glass (PMMA) clear or real glass clear
- designed and manufactured according to GMP standards
- high chemical resistance for all seals
- optional rear ring - attachment for cable gland (Option A)  
- attachment for flange connection dia. 36 mm for cable protection hose (Option B)
- protection class: IP69

## model rearing for cable outlet

Option A  
for cable gland



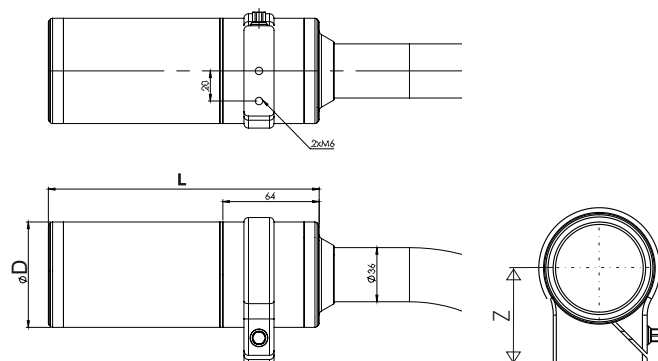
Option B  
for cable protection hose



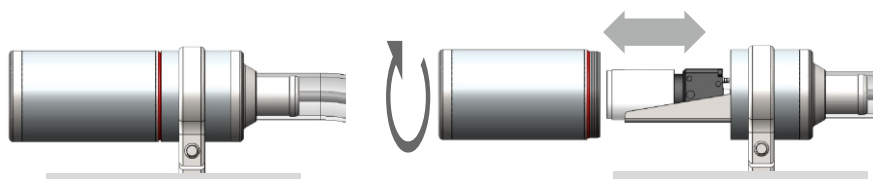
## applications

- pharmaceutical industry
- food industry
- medical technology
- cosmetics industry
- chemical industry
- etc.

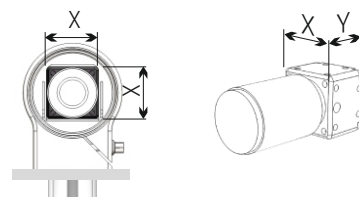
## dimensions CBS-P



## focusing camera



## dimensions camera



Adapter plate for camera mounting (camera-specific)

| model e.g. | diameter<br>Ø / D mm | length<br>L mm | housing<br>material                         | mounting   | pane   | mounting<br>fixing |
|------------|----------------------|----------------|---|--|--------|--------------------|
| CBS-P70    | 70                   | 180 - 250      | stainless steel<br>1.4404<br>polished<br>VA | acrylic glass<br>PMMA clear<br>AK<br>realglass clear<br>GK | 2 x M6 |                    |
| CBS-P80    | 80                   |                |   |  |        |                    |
| CBS-P100   | 100                  | 220            |   |  |        |                    |

| X<br>mm | Y<br>mm | Z<br>mm | weight incl. mounting<br>g (without camera) |
|---------|---------|---------|---|
| 40      | 50      | 60      | 850g  |
| 45      | 50      | 60      | 970g  |
| 65      | 50      | 80      | 3200 g                                      |

## model configurator

CBS-P



Housing outside diameter D (mm): **70 / 80 / 100**

Housing length L (mm): **180 / 200 / 220 / 250**

protective screen: **GK** (Glass clear) **AK** (PMMA clear) **GE** (Anti-reflective glass)

Cable exit: **00C** (Cable gland M40x1,5 / stainless steel 1.4571)  
**00E** (cable protection hose)

Camera type: Due to the numerous camera variants that can be integrated, it is necessary to a detailed specification of camera type and lens is required.

Standard version: **TEXT red**

model example: CBS-P70-180-GK-00C

All rights reserved. We claim right of property and copy right. Only upon approval by us copying and otherwise use is allowed.  
Technical changing reserved.

info@etw-technik.de • www.etw-technik.de

DasTechnikTeam.