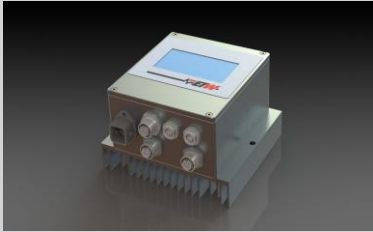


Brief Instruction for Assembly and Operation

BR02-08 V1.0 Lighting controller



BR02-08-V1.0

ETW Wollmershäuser GmbH
Frankenstraße 12
D-74549 Wolpertshausen

Telefon +49 (0)7904/92121-0
Telefax: +49 (0)7904/92121-21

E-Mail: info@etw-technik.de
10/2018 V0.4

Thank you for buying a BR02.

In this brief instruction, you will find information for quick startup of the device.
Please read this operating manual carefully prior to commissioning to prevent damage.
<http://www.etw-technik.de>.

Copyright © ETW Wollmershäuser GmbH 2018, Alle Rechte vorbehalten

Safety instructions

This brief instruction is directed at **qualified skilled personnel** and provides support during the intended and safe use of the device.



Danger to life from electric shock!

Even after the device is decommissioned by de-energizing it, electrical voltage is still be applied to internal circuit components.






- Only skilled electricians may work at electrical devices!
- Prior to all work, disconnect the device from the supply voltage.
- Prior to opening the device, wait for at least 5 minutes so that the residual voltage is discharged.
- Prior to any intervention, check for absence of voltage.
- Prior to commissioning, make sure that the voltage supply corresponds with the rated value of the device.
- Check the electrical equipment of the machine regularly. Any defects such as loose connections, damaged or worn cables must be eliminated immediately.
- Please observe the accident prevention and safety regulations for the case at hand.
- Please observe the general and local installation and safety regulations for operation on machinery with dangerous voltage (e.g. EN 50178).
- Please also observe regulations concerning proper use of tools and the use of personal protective equipment.
- In all operating modes, Emergency Stop devices must remain fully functioning. The release of the Emergency Stop devices must not cause uncontrolled restart.

Installation

Supply / Load / I/O

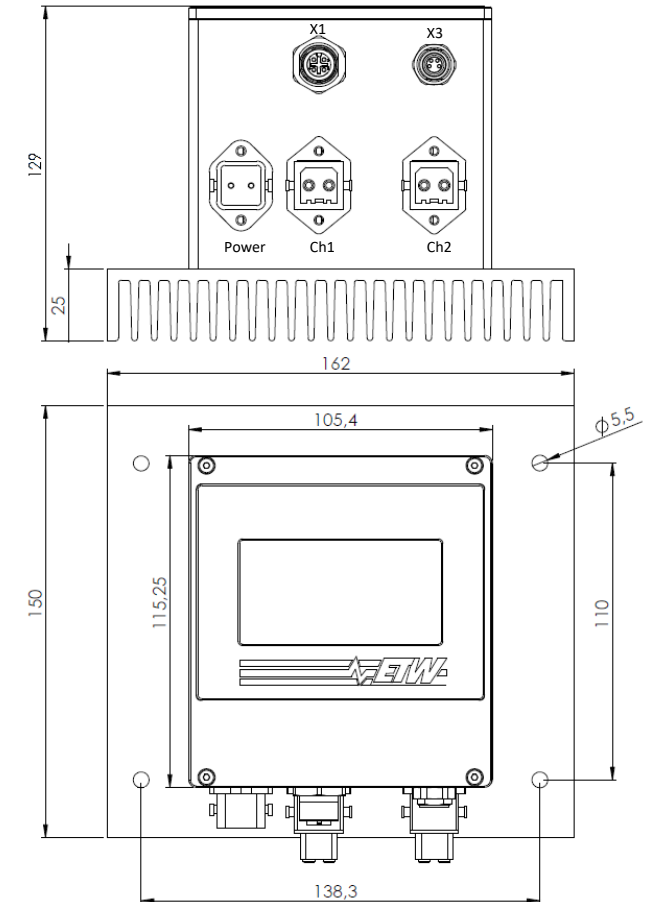
Contact	Pin	Description
Power	1	23,5Vdc...28Vdc
	2	GND
	PE	Protection earth PE
Ch1/ Ch2	1	Load 24Vdc
	2	Load 0Vdc GND
X1	1	+24Vdc
	2	X1-Output
	3	0Vdc
	4	X1-Input (e.g.:Enable)
X3	5	Analoginput
	1	+24Vdc
	2	N.C.
	3	0Vdc
	4	Trigger Input

Operation

Screen	Description
1.Step: Switch to operator mode	
	Press button: →
2.Step: Current setting	
	Press button: CURRENT
	Select current by pressing ▾ ▸
	Press button SET to confirm current.
3.Step: Switch output on	
	Press button: ON

Technical data

Dimension



Elektrical data

Supply voltage:	23,5Vdc...26Vdc
Power :	
Output current	
Ch1&Ch2:	
Continuous mode	0,04-8,00A
Trigger mode	0,04-20,00A
Power loss	
Ch1&Ch2:	15W
Operation:	Touchscreen
Screen:	LCD 128x64 Pixel
Degree of protection:	IP54
Operation temp. range:	5°C bis 40°C
Dimensions:	ca. (H)150mm x (B)162mm x (T)128mm
Mounting:	Vertical standing, distance upwards min. 200mm downwards min. 100mm, to the side min. 50mm